

# 16036BFSCCTTR – ACCESSIBLE SHOWERS

## With Seat

Interior: 60 x 36 x 76 ¾

Exterior: 66 x 38 ⅛ x 78 ¾

inches

The 16036BFSCCTTR roll-in shower features innovative installation design, including an engineered leveled base and improved front threshold with molded integral linear trench drain. A true time and money saver, our pre-leveled base lets you install directly on a **level** floor. And its front threshold is engineered to keep a constant level with the innovative nailing flange.



Shown fully-equipped

## AQUATIC ADVANTAGE

- National distribution
- 6 manufacturing facilities
- Private fleet
- Centralized customer service
- Field support

## COLOR & TRIM OPTIONS

| Stock | Upgraded        |
|-------|-----------------|
| White | Biscuit<br>Bone |

\*\*Additional custom colors available.  
(Contact Customer Service)

## FEATURES

- Pre-leveled base
- AcrylX™ applied acrylic surface
- 1 ⅛" skirt
- Barrier free when properly installed
- Smooth large subway tile wall
- Center front drain outlet
- Integral front trench drain
- Lifetime limited warranty

## OPTIONS

- Grab bars
- Fold-up seat
- Hand-held shower assembly with slide bar
- Pressure balancing mixing valve
- Large soap dish
- Small soap dish
- Curtain rod and/or shower curtain, shipped loose
- Tamper-proof grate

## CODE COMPLIANCE

- ADA
- FHA
- ICC/ANSI A117.1
- HUD UM73a
- CSA B45.5-11 / IAPMO Z124-2011

\*\*Code compliant when fully equipped and installed according to guidelines.

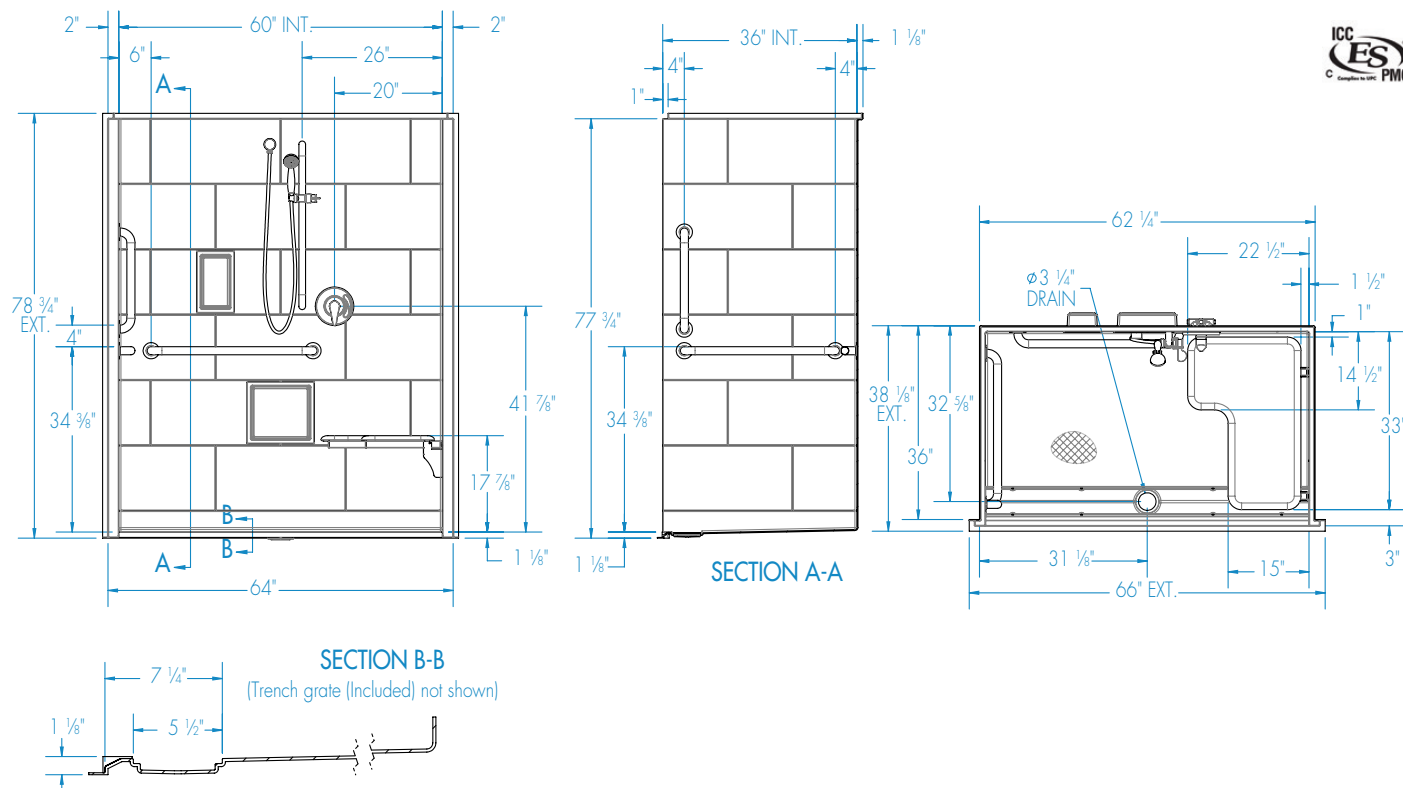


Aquatic products may be specified as Lasco Bathware.



**With Seat**

Interior: 60 x 36 x 76 ¾  
Exterior: 66 x 38 ⅛ x 78 ¾  
inches



**FEATURES**

Dimensional Tolerance ± ⅜". Dimensions needed for site preparation should be measured from the unit. Manufacturer assumes no responsibility for preparatory work.

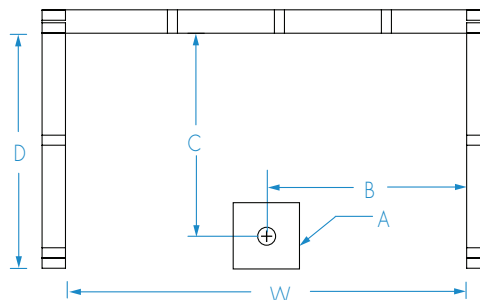
| Type and Model #    | Material | Wall Finish | Pieces | Drain        | Dam/Skirt Height | Net Wt. lbs | Pkg. Wt. lbs |
|---------------------|----------|-------------|--------|--------------|------------------|-------------|--------------|
| Shower 16036BFSCTTR | AcrylX™  | Smooth tile | 1      | Center Front | 1 ⅛ skirt        | 200         | 210          |

**DIMENSIONS**

| Specifications                  | inches      |
|---------------------------------|-------------|
| Width: Ext. / Int.              | 66 / 60     |
| Depth: Ext. / Int.              | 38 ⅛ / 36   |
| Height: Ext. / Int.             | 78 ¾ / 76 ¾ |
| Enclosure Opening:              | 60          |
| Skirt Height:                   | 1 ⅛         |
| Drain Rough-In (from Back Wall) | 32 ⅝        |
| Drain Rough-In (from Side Wall) | 31 ⅛        |

**FRAMING DIMENSIONS** inches

| Type   | D Depth | W Width | H Height | A       | B    | C    |
|--------|---------|---------|----------|---------|------|------|
| Alcove | 36      | 62 ¼    | -        | Box Out | 31 ⅛ | 32 ⅝ |



**Aquatic products may be specified as Lasco Bathware.**